



**SOF NATIONAL  
SCIENCE OLYMPIAD**

Total Questions : 35

Time : 1 hr.

PATTERN & MARKING SCHEME			
Section	(1) Logical Reasoning	(2) Science	(3) Achievers Section
No. of Questions	5	25	5
Marks per Ques.	1	1	2

**SYLLABUS**

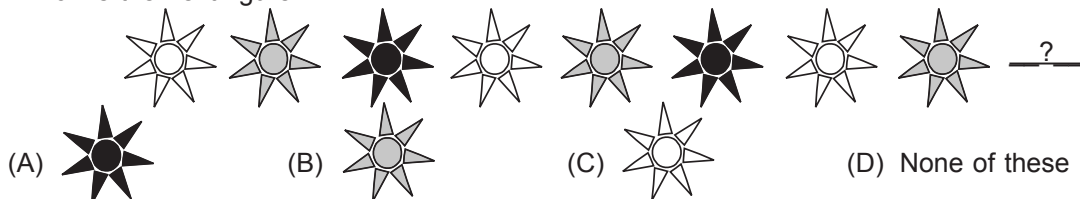
**Section – 1 :** Patterns, Measuring Units, Odd One Out, Series Completion, Geometrical Shapes, Analogy, Ranking Test, Grouping of Figures, Coding-Decoding, Embedded Figures.

**Section – 2 :** Plants, Animals, Human Body, Food, Housing and Clothing, Family and Festivals, Occupations, Good Habits and Safety Rules, Transport and Communication, Air, Water and Rocks, Earth and Universe.

**Section – 3 :** Higher Order Thinking Questions - Syllabus as per Section – 2.

**LOGICAL REASONING**

1. Which is the next figure?

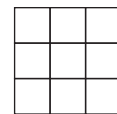


2. Riya is taller than Sarika, Sarika is taller than Preeti. Who is the smallest among them?

- (A) Riya (B) Sarika  
(C) Preeti (D) Can't be determined

3. How many squares are there in the figure?

- (A) 9 (B) 12  
(C) 13 (D) 14



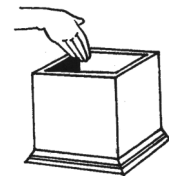
**SCIENCE**

4. The given figure shows a black box containing an object. Kunal put his hand into the box and made the following comments.

- It is cold.  
It is rough.  
It is hard.

Which sense organ did Kunal use to make these descriptions?

- (A) Ear (B) Skin (C) Tongue (D) Nose



5. My father's nephew or niece is my

- (A) Cousin (B) Uncle (C) Aunt (D) Brother-in-law.

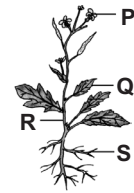
6. The person in the given figure is a/an

- (A) Doctor  
(B) Soldier  
(C) Diver  
(D) Astronaut.



7. Which part of the given plant produces seeds?

- (A) P
- (B) S
- (C) Q
- (D) R







8. Which of the following modes of transport does NOT have an engine and is NOT pulled by animals?

- (A) Cycle
- (B) Tonga
- (C) Jeep
- (D) Car

9. To which place of worship do Sikhs go to pray?

- (A) Temple
- (B) Mosque
- (C) Church
- (D) Gurudwara

10. Which of the following yields fibre?

- (A)  Barley
- (B)  Tea
- (C)  Cotton
- (D)  Mustard

11. If you face the rising Sun in the morning, the direction on your left is

- (A) North
- (B) South
- (C) East
- (D) West.



12. Which of the following is NOT the property of air?

- (A) Air fills space.
- (B) Air gives shape to things.
- (C) Air has weight.
- (D) None of these

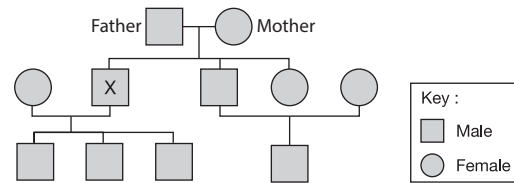
13. Which of the following is the correct order of planets from the nearest to Sun to the farthest?

- (A) Mars, Earth, Venus, Mercury
- (B) Mercury, Venus, Earth, Mars
- (C) Mercury, Mars, Earth, Venus
- (D) Venus, Mars, Earth, Mercury

### ACHIEVERS SECTION

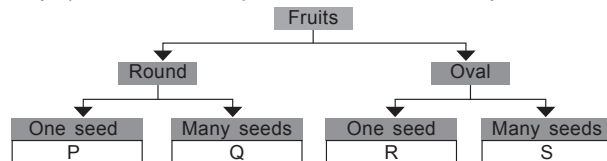
14. Study the given family tree carefully. How many nephews does 'X' have?

- (A) Three
- (B) Four
- (C) One
- (D) None



15. Study the given flow chart carefully. In which group (P, Q, R and S) fruit of kiwi can be placed?

- (A) P
- (B) Q
- (C) R
- (D) S



SPACE FOR ROUGH WORK

### ANSWERS

NSO – 1. (A) 2. (C) 3. (D) 4. (B) 5. (A) 6. (C) 7. (A) 8. (A) 9. (D) 10. (C) 11. (A) 12. (D) 13. (B) 14. (C) 15. (D)